

# Cobra DVR User Guide



Tel: 0113 2288599 | Email: paul@firsteye.co.uk |

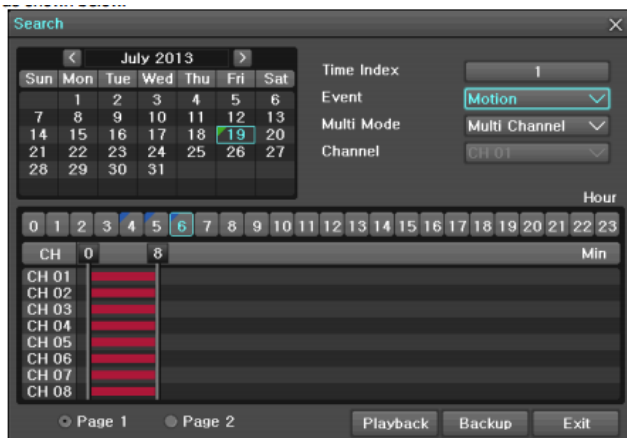
## Cobra DVR basic info:

Default password: 00000

Default ID: admin

App: Smart Eyes Pro

## Calendar Search Play back.



On the real-time monitoring screen, select {Menu} ⋄ {Search} ⋄ {Calendar Search} and then a searching window pops up as shown below. [Figure 5-27. Search Window]

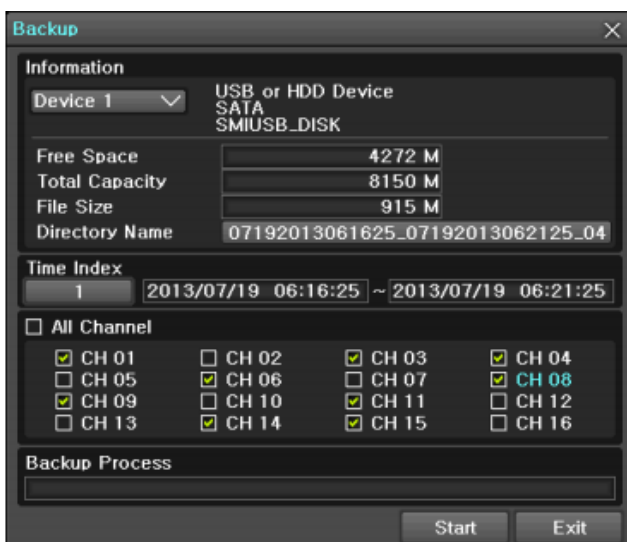
5 - 7 - 2 Year/Month/Day Selection

Select the desired [Year/Month/Day]. The color of the icon at the top-left of square in the calendar indicates the recording status. 5 - 7 - 3 Time Index

① Every time when the user changes the time at {Menu} ⋄ {Setup} ⋄ {Time} ⋄ {Date and Time} tab, a new folder(Index) is created and files saved in the folder before the time change can be found at

{Menu} ⋄ {Calendar Search} ⋄ {Time Index}. ② Selecting a file at {Menu} ⋄ {Calendar Search} ⋄ {Time Index} leads to a selection window pop up and the user can select a file in different folders (before time change)

## Backup (copying)



Backup In order to back up the data, make sure to check that either internal or external storage devices (CD, DVD or HDD) supports USB 2.0 is connected. For supported external devices, refer to Appendix. The user can back up data in the real-time monitoring, search, log, or the playback mode. ① the initial backup window menus. ②

A list of the devices that can be selected is outputted with simple information of the currently selected devices ③ Selecting a device by pressing the Select button causes the free space and total capacity for the selected device to be displayed. ④ Selecting a device causes the directory name based on the initial values for the

time and channel to be displayed and the size of the file to be backed up to be calculated. ⑤ The directory is named as same with the backup time. The first 12 digits are determined by the year/month/day/hour/minute/second for From, and the 12 digits in the middle, by the year/month/day/hour/minute/second for To. The last 2 digits are determined by the number of folders in the selected device. ⑥ Selecting a device enables selecting the backup time as well. As a rule, the From time cannot be later than the To time, and the To time cannot be earlier than the From time. ⑦ To change the start and end time, press the Select button after choosing the start and end time. Change year/month/day/hour/minute/second by using arrow keys and press the ESC button. ⑧ Changing the backup time causes the name of the directory to be backed up to be changed as well. ⑨ If the file to be backed up exceeds the free space, its size is displayed in a yellow box in case the selected device is capable of rerecording and in a red box if not. If the backup storage device is not formatted, in case the box displaying the size of the file to be backed up is displayed in yellow, and if backup is executed by pressing the Copy (Backup) button, a prompt asking(Yes/No) whether to erase the device will appear. Selecting {YES} causes the storage medium for the selected device to be erased. ⑩ Press the Copy (Backup) button. A prompt asking(Yes/No) whether to proceed with the backup. ✖ Select [Yes] to back up the data or [No] to stop the backup. Otherwise, press the [Cancel] button to return to the device selection mode on the backup window. ⑪ Select {Yes} to continue the backup.